

# Stenciling Instructions

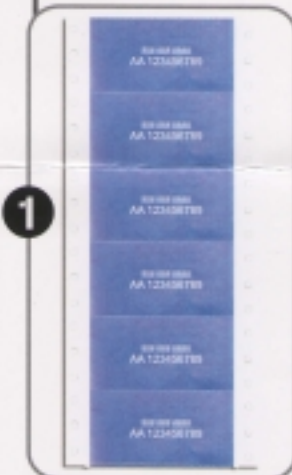
Read ALL steps BEFORE proceeding

quantum dna  
advanced anti-theft ID system

## Materials Needed

Blue etching stencils, etching solution, spray bottle filled with water, damp sponge or paper towel.

### Step One



Make sure the number on each stencil in the set are the same. Etching cannot be removed once applied.

### Step Three



Carefully dab etching solution over the numbers on each stencil tissue. Avoid putting the solution too close to the edge of the stencil tissue since any accidental contact with the glass surface will result in an etch.

### Step Two

Clean the window area to be etched. Separate and peel one blue stencil tissue from the backing paper and position it on the glass, making sure that it is level and right side up. Gently press the stencil tissue flat to smooth any wrinkles.

**Recommended locations for positioning stencil are:** The right hand bottom corner of the front and rear window shields, the bottom corner of the door window (directly above the door handles), and the corner of any rear window, t-top or sunroof.



### Step Four

Wait 2-3 minutes, then carefully peel off the blue stencil tissue and discard.

**IMMEDIATELY** spray the etch area with water to neutralize the etching solution and wipe a damp sponge or paper towel.



**YOUR STENCIL JOB IS NOW COMPLETE.**

#### HELPFUL HINTS:

Avoid application in wet, windy, or dusty conditions. In cold weather the etching process may take slightly longer. Over-etching will cause a "fuzziness" effect and bolder image.

#### WARNING:

Caution should be used when handling the solution. Prolonged contact on the skin should be avoided; rinse skin and eyes immediately with clean water. If swallowed give one or two glasses of water or milk and follow with eggwhite and vegetable oil, and call physician immediately. (solution contains Ammonium Bifluoride). If solution falls on car paint, wipe a damp sponge or cloth.