

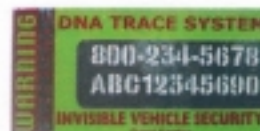
# AFTER APPLICATION DNA TRACE SYSTEM BODY PANEL LABEL SHOULD NOT BE VISIBLE UNLESS THE DOORS • HOOD • TRUNK ARE OPEN!



## Patented 6 Part Application Instructions

### (1) General Instructions

Before applying labels make certain the surface is free of wax, dirt, oil, grease and moisture. If needed, clean the surface with isopropyl alcohol.



### (2) Security Label Application

Identify the locations where the DNA TRACE SYSTEM BODY PANEL LABEL will be applied. Apply the label to each of the locations listed below.

**NOTE: THE LABELS SHOULD BE APPLIED ONLY TO A PAINTED METAL SURFACE THAT IS NOT VISIBLE UNDER NORMAL VIEWING CONDITIONS AND WOULD BE SEEN ONLY IF THE HOOD • DOOR • TRUNK WERE OPEN**

**HOOD:** Apply one label to the underside of the hood.

**DOORS:** Apply a label on the inside of all door panels by the door-locking mechanism.

**TRUNK LID, HATCHBACK, OR TAILGATE:** Apply one label to the underside of the trunk. Apply on side of the hatchbacks & tailgates.

**Applying the labels:** Gently peel the label from its backing material. Apply to areas of minimal anticipated wear and maximum protection from the elements. Do not select rough areas or junction points of components whenever possible. Store below 90 degrees Fahrenheit. Use a clean, dry surface before applying labels.

**Very Important:** Label requires ample time for the phosphorescent to penetrate the clear coat surface of the automobile.

**NOTE:** DNA Trace Marking System Body Panel Label normal curing time is from 7-10 days depending on temperature and humidity. To view embedded trace residue code an ultra violet black light lamp must be used.